

\$394,900 - 3121 Doverville Crescent Se, Calgary

MLS® #A2211929

\$394,900

5 Bedroom, 2.00 Bathroom, 985 sqft

Residential on 0.02 Acres

Dover, Calgary, Alberta

Spacious Yard & Fully Fenced. This 984 Sq Ft half duplex offers, 3 bedrooms up and 2 down, 2 full bathrooms, 2 kitchens, separate entrances & 2 laundry (illegal suite). The living/dinning room is a great size with big bright windows. HWT (2024), Furnace (2016), Roof (2015), Windows (2012) . Wonderful off street parking for 3 in the back, plus greenhouse and garden shed for convenience. A Great investment, just make this home your own.

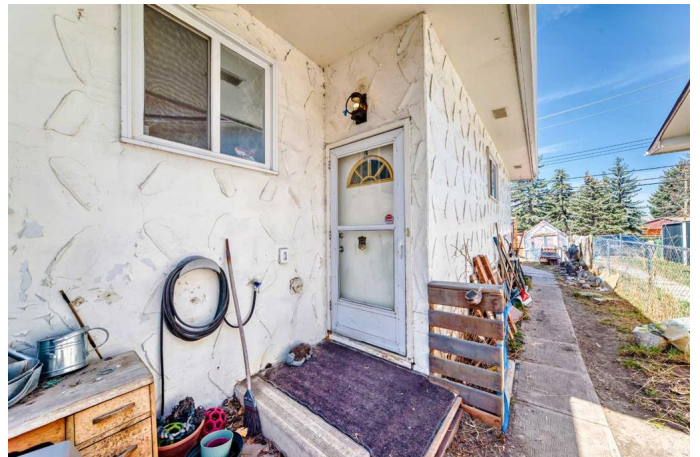
Built in 1970

Essential Information

MLS® #	A2211929
Price	\$394,900
Bedrooms	5
Bathrooms	2.00
Full Baths	2
Square Footage	985
Acres	0.02
Year Built	1970
Type	Residential
Sub-Type	Semi Detached
Style	Side by Side, Bi-Level
Status	Active

Community Information

Address	3121 Doverville Crescent Se
Subdivision	Dover



City	Calgary
County	Calgary
Province	Alberta
Postal Code	T2B 2V1

Amenities

Parking Spaces	3
Parking	Off Street

Interior

Interior Features	See Remarks
Appliances	Dryer, Electric Stove, Range Hood, Refrigerator, Washer
Heating	Forced Air
Cooling	Wall/Window Unit(s)
Has Basement	Yes
Basement	Finished, Full

Exterior

Exterior Features	Other
Lot Description	Back Lane, Back Yard, Front Yard, Rectangular Lot
Roof	Tar/Gravel
Construction	Stucco, Wood Frame
Foundation	Poured Concrete

Additional Information

Date Listed	April 17th, 2025
Days on Market	3
Zoning	R-C2

Listing Details

Listing Office	Century 21 Bamber Realty LTD.
----------------	-------------------------------

Data is supplied by Pillar 9â„¢ MLS® System. Pillar 9â„¢ is the owner of the copyright in its MLS® System. Data is deemed reliable but is not guaranteed accurate by Pillar 9â„¢. The trademarks MLS®, Multiple Listing Service® and the associated logos are owned by The Canadian Real Estate Association (CREA) and identify the quality of services provided by real estate professionals who are members of CREA. Used under license.