

# \$599,900 - 5411 Rundlevue Road Ne, Calgary

MLS® #A2211859

**\$599,900**

4 Bedroom, 2.00 Bathroom, 1,027 sqft

Residential on 0.15 Acres

Rundle, Calgary, Alberta

**OPEN HOUSE THIS SUNDAY! APR20  
11AM-1PM. Rare Opportunity! Large Lot with  
RV Pad & Oversized Detached Heated  
Garage – Park 8 Cars!**

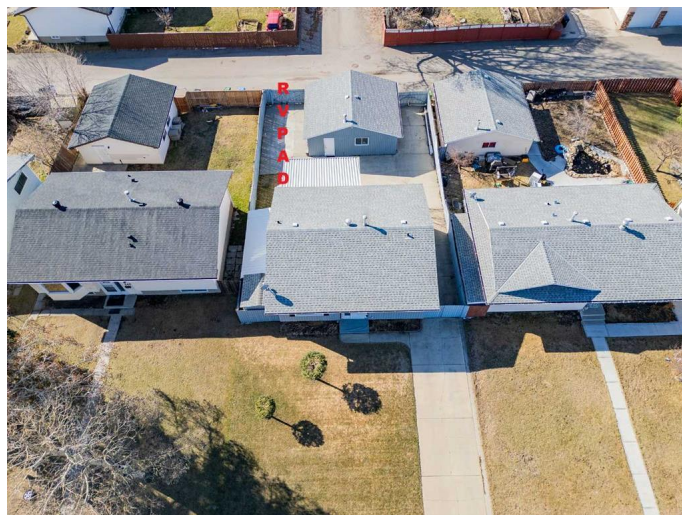
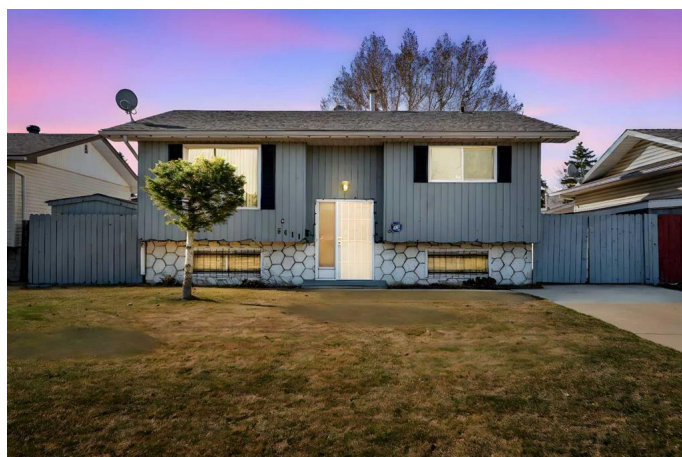
Located on one of the nicest streets in the Rundle community, this home offers endless possibilities for those seeking a spacious, family-friendly property or for an investment. Perfect for a large family with multiple vehicles, outdoor toys, or a hobbyist, this unique property features a massive lot, a heated oversized detached garage, and an RV pad, providing ample space for all your needs. Whether you need to park your cars, boat, or RV, this property has room for everything!

The home is a bi-level with plenty of room to live comfortably or customize to your needs. On the main level, you'll find two spacious bedrooms, a large living area, a dining area, and a kitchen – perfect for family gatherings or entertaining. The basement is equally impressive, offering a large rec room, two additional bedrooms, and a huge backyard that's perfect for outdoor activities or additional storage.

**LOCATION, Location, Location!**

This property is ideally located just minutes from everything you need. You'll be in close proximity to the Peter Lougheed General Hospital, shopping centers, restaurants, and several excellent schools. Whether you're looking for public or private education options, you'll find plenty to choose from, including:

-Dr. Gordon Higgins School (Elementary)



- St. Rose of Lima Elementary and Junior High School
- Lester B. Pearson High School
- Mountain View Academy (Private School)
- Bishop McNally High School
- Guy Weadick School

Whether you're looking for a move-in-ready home or a space to bring your dream vision to life, this property provides a rare opportunity for buyers who want to be close to it all!

Don't miss out â€“ call today for a private showing or reach out to your favorite realtor.

Built in 1974

### Essential Information

|                |             |
|----------------|-------------|
| MLS® #         | A2211859    |
| Price          | \$599,900   |
| Bedrooms       | 4           |
| Bathrooms      | 2.00        |
| Full Baths     | 2           |
| Square Footage | 1,027       |
| Acres          | 0.15        |
| Year Built     | 1974        |
| Type           | Residential |
| Sub-Type       | Detached    |
| Style          | Bi-Level    |
| Status         | Active      |

### Community Information

|             |                        |
|-------------|------------------------|
| Address     | 5411 Rundlevue Road Ne |
| Subdivision | Rundle                 |
| City        | Calgary                |
| County      | Calgary                |
| Province    | Alberta                |
| Postal Code | T1Y 1J7                |

### Amenities

|                |   |
|----------------|---|
| Parking Spaces | 8 |
|----------------|---|

|              |  |
|--------------|--|
| Parking      | Double Garage Detached, Parking Pad, RV Access/Parking, RV Gated |
| # of Garages | 2  |

### Interior

|                   |  |
|-------------------|--|
| Interior Features | Bar, Breakfast Bar, Central Vacuum, No Animal Home, No Smoking Home, Storage |
| Appliances        | Dishwasher, Electric Stove, Refrigerator, Washer/Dryer                       |
| Heating           | Central  |
| Cooling           | None   |
| Has Basement      | Yes  |
| Basement          | Finished, Full   |

### Exterior

|                   |   |
|-------------------|---|
| Exterior Features | Private Yard  |
| Lot Description   | Back Lane, Back Yard, Front Yard, Lawn, Low Maintenance Landscape |
| Roof              | Asphalt Shingle   |
| Construction      | Wood Frame, Wood Siding   |
| Foundation        | Poured Concrete   |

### Additional Information

|                |                  |
|----------------|------------------|
| Date Listed    | April 18th, 2025 |
| Days on Market | 2                |
| Zoning         | R-CG             |

### Listing Details

|                |                        |
|----------------|------------------------|
| Listing Office | Royal LePage Benchmark |
|----------------|------------------------|

Data is supplied by Pillar 9â„¢ MLS® System. Pillar 9â„¢ is the owner of the copyright in its MLS® System. Data is deemed reliable but is not guaranteed accurate by Pillar 9â„¢. The trademarks MLS®, Multiple Listing Service® and the associated logos are owned by The Canadian Real Estate Association (CREA) and identify the quality of services provided by real estate professionals who are members of CREA. Used under license.