

\$399,900 - 20 Wellington Cove, Strathmore

MLS® #A2205164

\$399,900

5 Bedroom, 2.00 Bathroom, 1,097 sqft
Residential on 0.15 Acres

Westmount_Strathmore, Strathmore, Alberta

This isn't just a home—it's your family's next chapter.

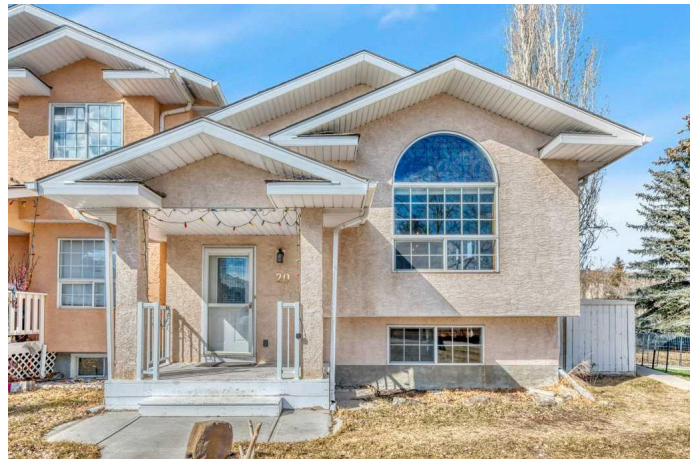
Tucked into a quiet cul-de-sac in the heart of Strathmore, this five-bedroom bi-level beauty is packed with potential and primed for real life. From the moment you step into the front entry, you'll feel the generous flow of space, natural light, and good energy.

Upstairs, the vaulted ceilings open up a bright and airy living room anchored by a picture window that practically begs for a cozy chair and a good book. The kitchen? Oh, it's big. We're talking corner pantry, tons of antique-finish cabinetry, and an eating nook that actually fits a table. Open the back door and head straight to the deck, where the gas BBQ hookup and fully fenced backyard are ready for summer nights, cornhole tournaments, or maybe even that dream garden you've pinned 47 times.

Three bedrooms and a full bathroom round out the upper level, while downstairs offers two more bedrooms, a second full bath, laundry with storage, and a family room that's perfect for movie marathons, kid chaos, or whatever life throws your way.

Now let's talk outside:

This is a massive corner lot—fully fenced and wrapped in mature trees for privacy and charm. There's room for a pool, a garden,



AND a future garage. And get this: parking for 7 vehicles. Thatâ€™s not a typo. Five in the back alley, two out front.

Walking distance to schools and coffee (yes, that matters). Only 40 minutes to Calgary, but a whole world away from the hustle.

Whether youâ€™re upsizing, investing, or craving a quieter pace with room to breatheâ€”20 Wellington Cove has the space, the function, and the feel.

So... you coming to see it, or what? **All building supplies for the basement drop ceiling is located onsite

Built in 1994

Essential Information

MLS® #	A2205164
Price	\$399,900
Bedrooms	5
Bathrooms	2.00
Full Baths	2
Square Footage	1,097
Acres	0.15
Year Built	1994
Type	Residential
Sub-Type	Semi Detached
Style	Side by Side, Bi-Level
Status	Active

Community Information

Address	20 Wellington Cove
Subdivision	Westmount_Strathmore
City	Strathmore
County	Wheatland County
Province	Alberta
Postal Code	T1P 1M3

Amenities

Parking Spaces	6
Parking	Alley Access, Off Street, On Street, Parking Pad, Paved, Unpaved

Interior

Interior Features	Ceiling Fan(s), Laminate Counters, Pantry, Walk-In Closet(s)
Appliances	Dishwasher, Electric Stove, Microwave, Range Hood, Refrigerator, Washer/Dryer
Heating	Forced Air, Natural Gas
Cooling	None
Has Basement	Yes
Basement	Partial, Partially Finished

Exterior

Exterior Features	Private Yard, Storage
Lot Description	Back Lane, Back Yard, Cul-De-Sac, Lawn, Pie Shaped Lot, Treed
Roof	Asphalt Shingle
Construction	Stucco, Wood Frame
Foundation	Poured Concrete

Additional Information

Date Listed	March 25th, 2025
Days on Market	18
Zoning	R3

Listing Details

Listing Office	RE/MAX Key
----------------	------------

Data is supplied by Pillar 9â„¢ MLSÂ® System. Pillar 9â„¢ is the owner of the copyright in its MLSÂ® System. Data is deemed reliable but is not guaranteed accurate by Pillar 9â„¢. The trademarks MLSÂ®, Multiple Listing ServiceÂ® and the associated logos are owned by The Canadian Real Estate Association (CREA) and identify the quality of services provided by real estate professionals who are members of CREA. Used under license.