

# \$364,900 - 2411, 111 Wolf Drive Se, Calgary

MLS® #A2198755

**\$364,900**

2 Bedroom, 2.00 Bathroom, 684 sqft

Residential on 0.00 Acres

Wolf Willow, Calgary, Alberta

Do not miss out this brand new 2 bedrooms plus Den condo, ready to move in. Walk in the front door, expose to the all white full height cabinetry with soft close door & drawers, stainless steel appliances, , matching white quartz countertops, Over looking through the Livingroom, with Patio door to the balcony, the view is be onto the shopping plaza across the street, there is pet spa, gym, owner lounge, bike storage available.

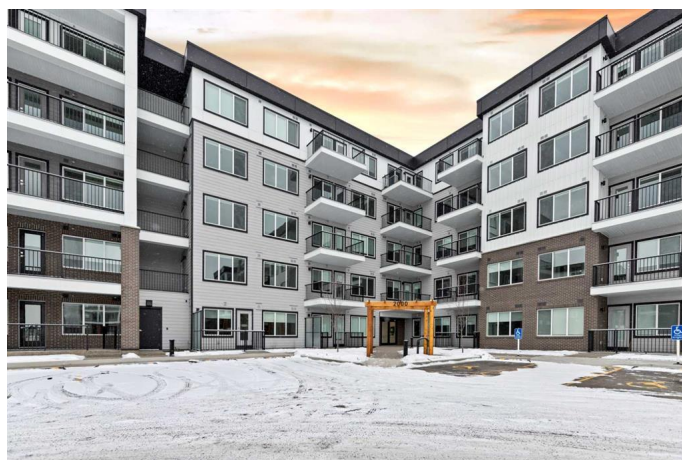
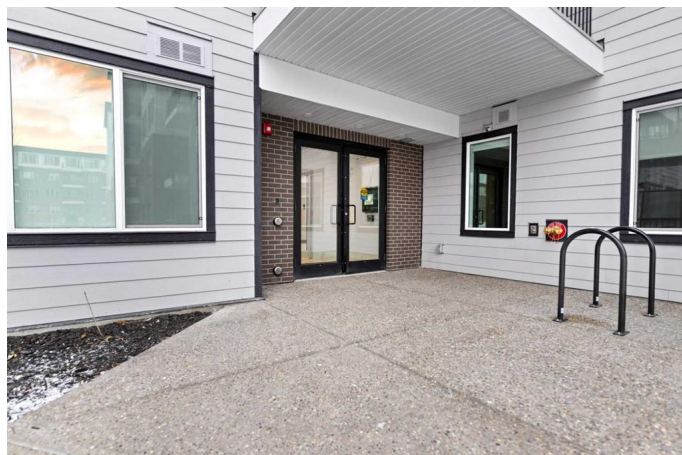
Built in 2024

## Essential Information

MLS® #	A2198755
Price	\$364,900
Bedrooms	2
Bathrooms	2.00
Full Baths	2
Square Footage	684
Acres	0.00
Year Built	2024
Type	Residential
Sub-Type	Apartment
Style	Single Level Unit
Status	Active

## Community Information

Address	2411, 111 Wolf Drive Se
Subdivision	Wolf Willow



City	Calgary
County	Calgary
Province	Alberta
Postal Code	T2X 5X2

### **Amenities**

Amenities	Elevator(s), Fitness Center, Parking, Visitor Parking
Parking Spaces	1
Parking	Titled, Underground

### **Interior**

Interior Features	No Smoking Home, Quartz Counters, Vinyl Windows
Appliances	Dishwasher, Microwave Hood Fan, Range, Refrigerator, Washer/Dryer, Window Coverings
Heating	Baseboard, Electric
Cooling	None
# of Stories	5

### **Exterior**

Exterior Features	Balcony
Roof	Asphalt Shingle
Construction	Asphalt, Brick, Concrete

### **Additional Information**

Date Listed	March 3rd, 2025
Days on Market	44
Zoning	M-2

### **Listing Details**

Listing Office	URBAN-REALTY.ca
----------------	-----------------

Data is supplied by Pillar 9â„¢ MLSÂ® System. Pillar 9â„¢ is the owner of the copyright in its MLSÂ® System. Data is deemed reliable but is not guaranteed accurate by Pillar 9â„¢. The trademarks MLSÂ®, Multiple Listing ServiceÂ® and the associated logos are owned by The Canadian Real Estate Association (CREA) and identify the quality of services provided by real estate professionals who are members of CREA. Used under license.