

\$499,900 - 71 Pickwick Lane S, Lacombe

MLS® #A2197749

\$499,900

4 Bedroom, 3.00 Bathroom, 1,296 sqft
Residential on 0.24 Acres

English Estates, Lacombe, Alberta

Welcome to 71 Pickwick Lane! A spacious, 4 bed, 3 bath bungalow nestled in the charming community of Lacombe. This corner lot boasts a generous sized yard, a small garden and evergreens for a little privacy. Inside, the great use of space includes 3 bedrooms upstairs, a huge rec/family room downstairs and storage room to fit all the families things! The double attached garage also lends extra space for storage. This house would make a perfect home for a growing family!

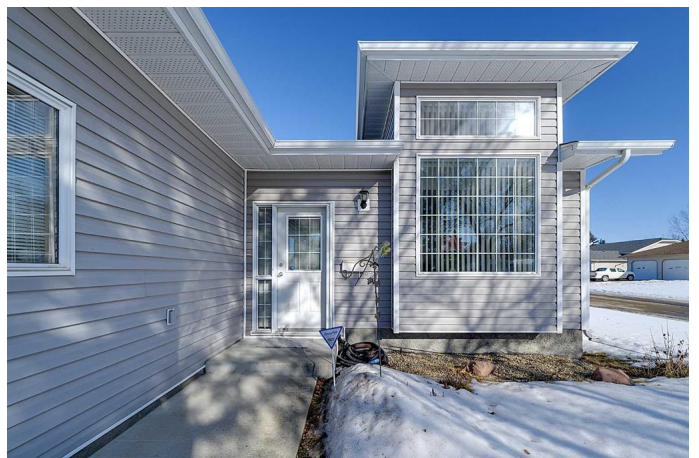
Built in 1994

Essential Information

MLS® #	A2197749
Price	\$499,900
Bedrooms	4
Bathrooms	3.00
Full Baths	3
Square Footage	1,296
Acres	0.24
Year Built	1994
Type	Residential
Sub-Type	Detached
Style	Bungalow
Status	Active

Community Information

Address	71 Pickwick Lane S
Subdivision	English Estates



City	Lacombe
County	Lacombe
Province	Alberta
Postal Code	T4L 1T4

Amenities

Parking Spaces	4
Parking	Double Garage Attached, Off Street, RV Access/Parking
# of Garages	2

Interior

Interior Features	Ceiling Fan(s), Central Vacuum, Closet Organizers, Kitchen Island, No Animal Home, No Smoking Home, Pantry, Storage, Sump Pump(s)
Appliances	Built-In Oven, Dishwasher, Electric Stove, Refrigerator, Washer/Dryer
Heating	Fireplace(s), Forced Air
Cooling	None
Fireplace	Yes
# of Fireplaces	2
Fireplaces	Electric, Gas
Has Basement	Yes
Basement	Finished, Full

Exterior

Exterior Features	Fire Pit
Lot Description	Corner Lot
Roof	Shingle
Construction	Vinyl Siding
Foundation	Poured Concrete

Additional Information

Date Listed	February 28th, 2025
Days on Market	37
Zoning	R1

Listing Details

Listing Office	Royal LePage Network Realty Corp.
----------------	-----------------------------------

Data is supplied by Pillar 9â„¢ MLSÂ® System. Pillar 9â„¢ is the owner of the copyright in its MLSÂ® System. Data is deemed reliable but is not guaranteed accurate by Pillar 9â„¢. The trademarks MLSÂ®, Multiple Listing ServiceÂ® and the associated logos are owned by The Canadian Real Estate Association (CREA) and identify the quality of services provided by real estate professionals who are members of CREA. Used under license.