

\$1,450,000 - 116 Park Drive, Rural Rocky View County

MLS® #A2189924

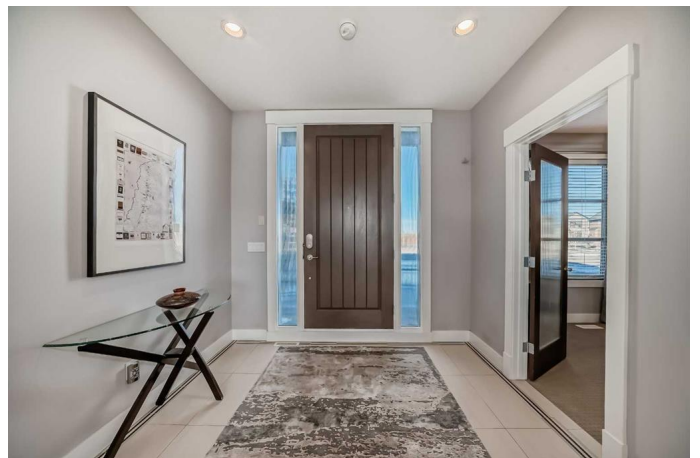
\$1,450,000

5 Bedroom, 5.00 Bathroom, 3,787 sqft

Residential on 0.25 Acres

Cambridge Park, Rural Rocky View County, Alberta

This custom built home in Cambridge Park Estates sits on a 1/4 ACRE beautifully landscaped lot backing onto a GREENSPACE with a sunny SOUTH FACING Backyard! Fantastic CURB APPEAL with a massive driveway & 3-CAR GARAGE. This stunning home features 5 Bedrooms & 4 and a half Bathrooms! This home has everything, quality, functionality, custom finishings and plenty of space! The main floor finishings are extraordinary with beautiful hardwood floors adorning much of the main-floor space. The main kitchen and SPICE KITCHEN (butler's pantry) are a chef's dream, with plenty of cabinetry, counter space and storage. The dining area has room to host large sit down gatherings. The casual kitchen eating area has a patio door that open onto a beautiful balcony with marvelous views of endless greenspace the home backs onto. The large and inviting family room on the main floor, has a lovely high ceiling with a coffered ceiling upgrade and a fireplace and built in bookshelves / entertainment center as its centerpiece. The mud room is extra large with a walk in closet with plenty of storage space. The main floor also features a guest 2 piece powder room in addition to a main-floor bedroom (or office) with it's own lovely 3-Piece ENSUITE. The large family will love the 4 bedrooms up each with their own WALK IN CLOSETS, a large BONUS ROOM and a large Primary BEDROOM with a large SPA



LIKE 5 PIECE ENSUITE. The upper floor features upgraded carpet and high 9-Ceilings! The lower walk-out level is undeveloped and ready to be developed into additional family space! The backyard features a lovely STAMPED CONCRETE patio, rock garden waterfall, trees & shrubs, and plenty of room for you to enjoy the peace and serenity of this rural estate community! With a large greenspace and pathway at your backyard's doorstep, including a large park area a short distance away, you will feel right at home! This community is within minutes to Calgary, Chestermere, and East Hills, minutes to Downtown Calgary, and provides quick access to Stoney Trail, Highway 1, and McKnight Blvd making it easy to get anywhere in and around the city. Call your favorite realtor to book a showing today!

Built in 2012

Essential Information

MLS® #	A2189924
Price	\$1,450,000
Bedrooms	5
Bathrooms	5.00
Full Baths	4
Half Baths	1
Square Footage	3,787
Acres	0.25
Year Built	2012
Type	Residential
Sub-Type	Detached
Style	2 Storey
Status	Active

Community Information

Address	116 Park Drive
Subdivision	Cambridge Park

City	Rural Rocky View County
County	Rocky View County
Province	Alberta
Postal Code	T1Z 0A4

Amenities

Amenities	Other
Parking Spaces	3
Parking	Additional Parking, Driveway, Triple Garage Attached
# of Garages	3

Interior

Interior Features	Bookcases, Built-in Features, Ceiling Fan(s), Double Vanity, Granite Counters, High Ceilings, Kitchen Island, No Smoking Home, Open Floorplan, Pantry, Soaking Tub, Storage, Sump Pump(s), Walk-In Closet(s)
Appliances	Built-In Oven, Dishwasher, Dryer, Electric Cooktop, Electric Stove, Garage Control(s), Range, Range Hood, Refrigerator, Washer
Heating	Forced Air
Cooling	Central Air
Fireplace	Yes
# of Fireplaces	1
Fireplaces	Gas, Great Room
Has Basement	Yes
Basement	Full, Unfinished

Exterior

Exterior Features	Other
Lot Description	Back Yard, Backs on to Park/Green Space, Corner Lot, Landscaped, Lawn, Level, Views, Waterfall
Roof	Asphalt Shingle
Construction	Wood Frame
Foundation	Poured Concrete

Additional Information

Date Listed	January 23rd, 2025
Days on Market	80
Zoning	R-1
HOA Fees	100
HOA Fees Freq.	MON

Listing Details

Listing Office Rhinorealty

Data is supplied by Pillar 9â,,ç MLSÂ® System. Pillar 9â,,ç is the owner of the copyright in its MLSÂ® System. Data is deemed reliable but is not guaranteed accurate by Pillar 9â,,ç. The trademarks MLSÂ®, Multiple Listing ServiceÂ® and the associated logos are owned by The Canadian Real Estate Association (CREA) and identify the quality of services provided by real estate professionals who are members of CREA. Used under license.