

\$669,900 - 2066 Fowler Road Sw, Airdrie

MLS® #A2189456

\$669,900

3 Bedroom, 3.00 Bathroom, 1,956 sqft
Residential on 0.00 Acres

Wildflower, Airdrie, Alberta

Welcome to the brand new community of wildflower. Brand new 3 bedroom detached single family. Open floor plan, modern kitchen. 3 good size bedrooms with bonus area. sunshine basement awaits your final touch. Good size deck. MUST SEE!!

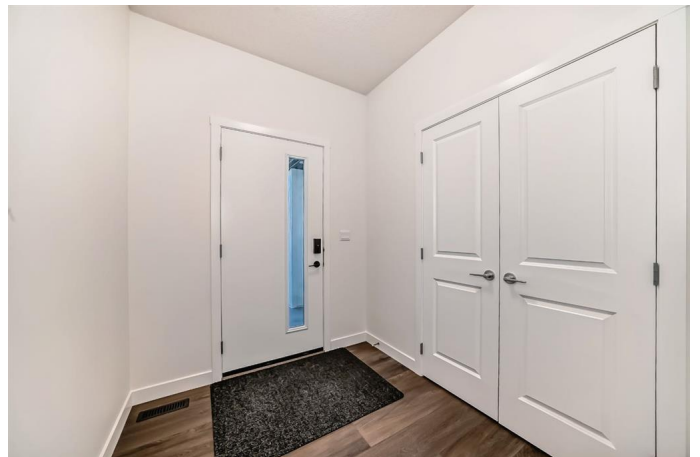
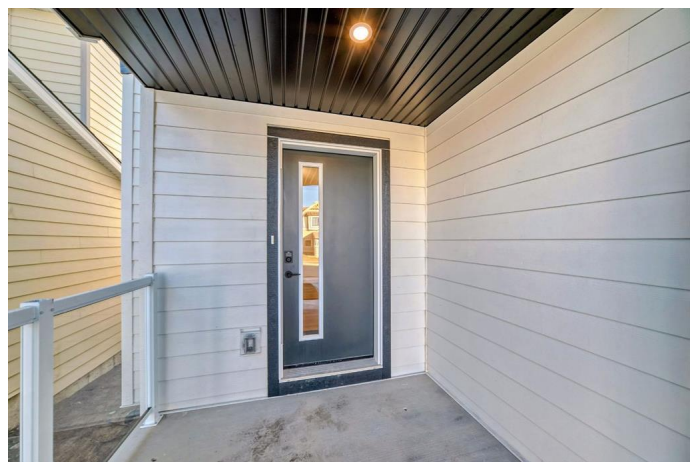
Built in 2024

Essential Information

| | |
|----------------|-------------|
| MLS® # | A2189456 |
| Price | \$669,900 |
| Bedrooms | 3 |
| Bathrooms | 3.00 |
| Full Baths | 2 |
| Half Baths | 1 |
| Square Footage | 1,956 |
| Acres | 0.00 |
| Year Built | 2024 |
| Type | Residential |
| Sub-Type | Detached |
| Style | 2 Storey |
| Status | Active |

Community Information

| | |
|-------------|---------------------|
| Address | 2066 Fowler Road Sw |
| Subdivision | Wildflower |
| City | Airdrie |
| County | Airdrie |
| Province | Alberta |



Postal Code T4B 5M3

Amenities

Amenities None
Parking Spaces 4
Parking Double Garage Attached
of Garages 2

Interior

Interior Features Kitchen Island, Open Floorplan
Appliances Dishwasher, Electric Stove, Microwave Hood Fan, Refrigerator
Heating Central
Cooling None
Has Basement Yes
Basement Full, Unfinished

Exterior

Exterior Features Balcony, Other
Lot Description Other
Roof Asphalt Shingle
Construction Other
Foundation Poured Concrete

Additional Information

Date Listed January 22nd, 2025
Days on Market 83
Zoning R-1
HOA Fees 1
HOA Fees Freq. ANN

Listing Details

Listing Office Executive Real Estate Services

Data is supplied by Pillar 9â,,ç MLSÂ® System. Pillar 9â,,ç is the owner of the copyright in its MLSÂ® System. Data is deemed reliable but is not guaranteed accurate by Pillar 9â,,ç. The trademarks MLSÂ®, Multiple Listing ServiceÂ® and the associated logos are owned by The Canadian Real Estate Association (CREA) and identify the quality of services provided by real estate professionals who are members of CREA. Used under license.